



## INSURANCE VALUATION

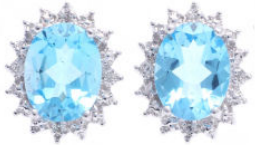
### Jeweller Information

Precious Jewels UK  
www.preciousjewelsuk.com

### Client Information

N/A  
To receive a free personalised copy of this valuation, register your details on our website.  
www.agigem.com

### Item Identification




### Comments

Graded Mounted

<b>Certificate No</b>	<b>937901</b>
<b>Description</b>	<b>9ct White Gold Diamond And Blue Topaz Earring. Total Gold Weight 2.5 Grams. Total Gem Weight 3.68 Carats.</b>
<b>Shape</b>	<b>Brilliant</b>
<b>Weight</b>	<b>0.03 carats</b>
<b>Clarity</b>	<b>SI</b>
<b>Colour</b>	<b>G</b>
<b>Cut Grade</b>	<b>Very Good</b>
<b>Value</b>	<b>£676.50</b>

Appraiser

Date

  
**Online Proof**

19 November 2018

The article has been micro photographed resulting in an enlarged photograph so as to allow details to be easily observed. This photograph is representative of the article inspected but it may not be a photograph of your individual article. We may at times show a wire frame diagram of the item with distinguishing marks marked in red and/or green for identification in place of the micro photograph of the article. This document may not be reproduced by any means whatsoever unless complete. Antwerpse Gemologische Instelling and agi is a trading style of. agigem Limited. Registered Company No. 6271125 in UK.

I have examined the article listed in the above description on behalf of agi. In my opinion, the figure stated represents the value of the article for the purpose and at the date stated on this document.